

Web Tooling

WebSphere Application Server - Express Beta

Objectives

- Features of Web tooling
- Describe the tools for Web development
- Understand how Web tooling is used to create and deploy a Web application

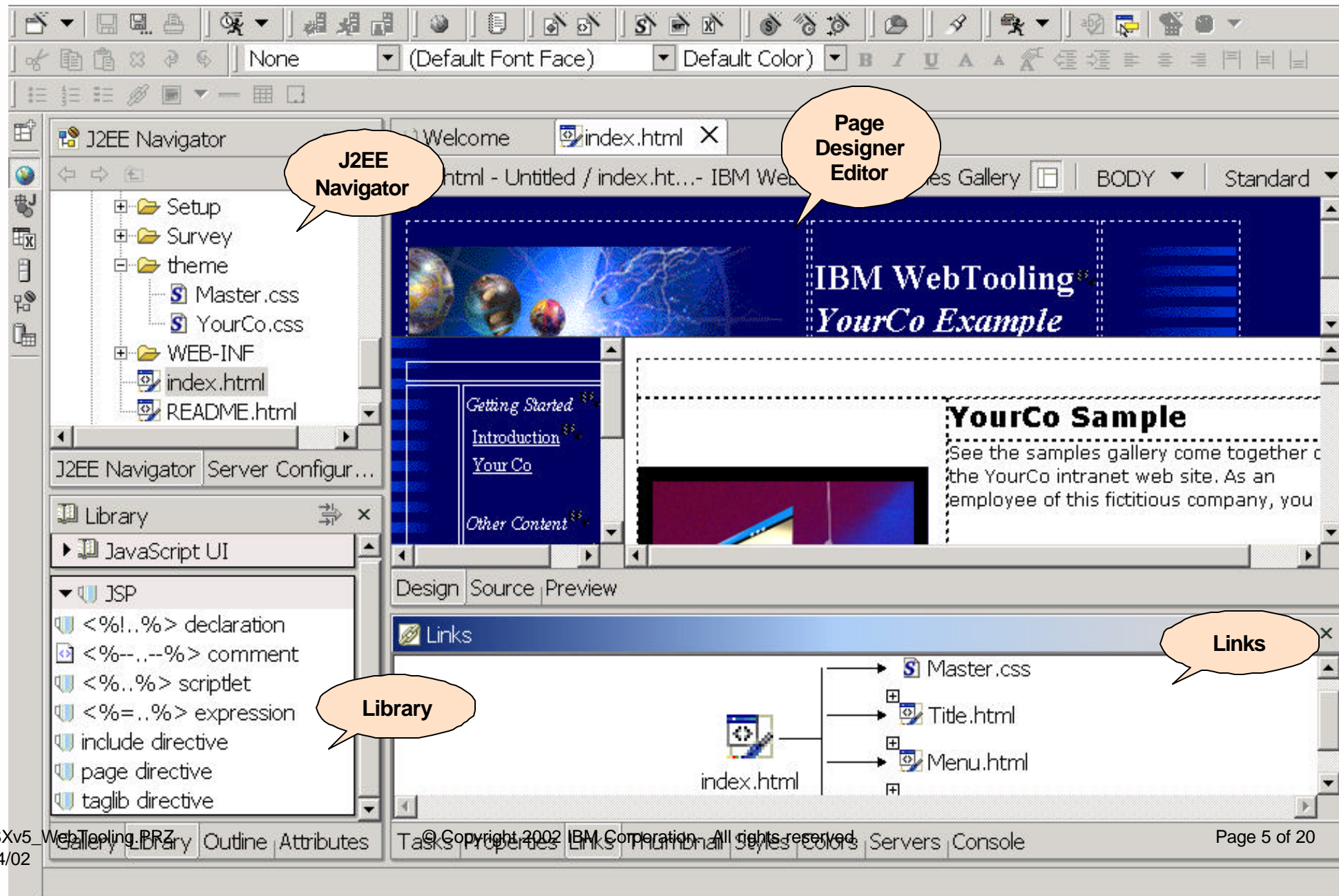
Web Application Creation and Deployment Process

- Web Applications are built from resources
 - ▶ HTML pages, Images, etc.
 - ▶ JSPs
 - ▶ Servlets
- Resources are manipulated with the tools
 - ▶ Editors
 - Page Designer (for HTML, JSP, etc.)
 - Cascading Style Sheet (CSS) editor
 - Java Script editor
 - Java Editor (for Servlets)
 - Web Deployment Descriptor (web.xml) editor
 - Web Art Designer (for images)
 - ▶ Wizards
 - ▶ Web page creation from Java Bean or Database
- Web Applications are packaged in WAR (Web modules). The WARs are packaged in EAR (Enterprise Application) files, that are deployed to the Application Servers

Simple steps to create a Enterprise Web Application

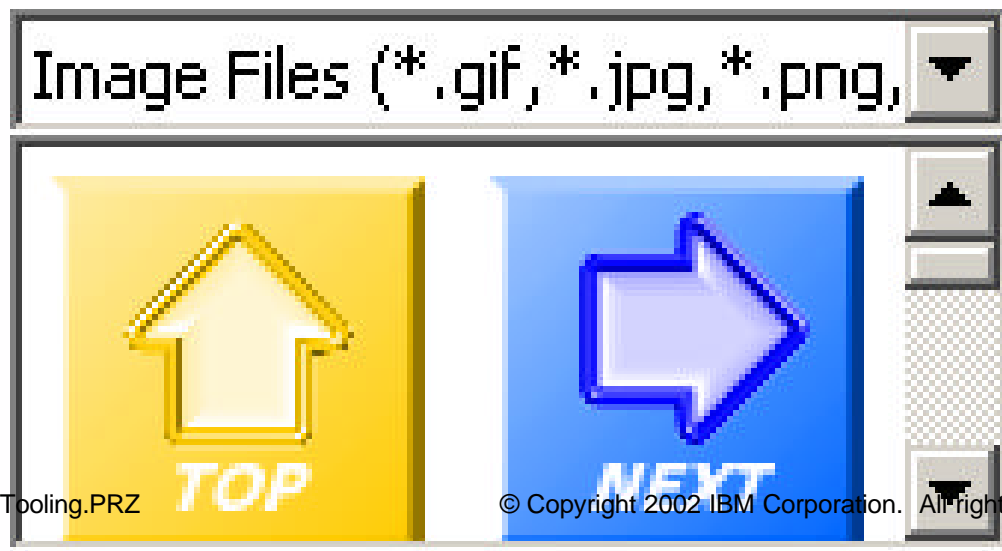
- Create Web Project (module)
 - ▶ Can create its associated New Enterprise application (EAR) or add the Web project to an existing Enterprise Application
- Create any number of Servlets, HTML, JSP resources for the Web project using the appropriate wizard
 - ▶ The wizard will specify the directory under the Web Project to save the files
- If needed, modify the EAR and WAR Deployment descriptor using the appropriate Deployment Descriptor editor

Web Perspective



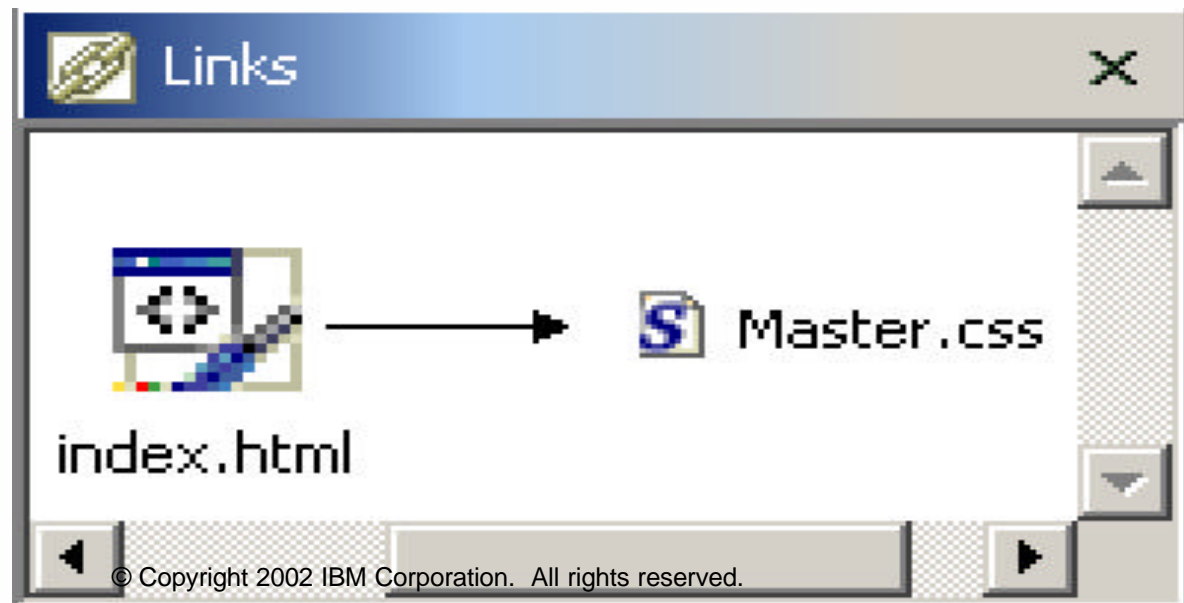
Web Perspective

- The Web perspective combines views and editors that assist you with Web application development. Some of the views are:
 - ▶ Gallery
 - ▶ Outline
 - ▶ Properties
 - ▶ Links
 - ▶ Thumbnail
 - ▶ Styles
 - ▶ Colors



Link Management Tools: Links View and Link Management

- Links view shows
 - ▶ Files in your projects
 - ▶ Linkages between them
 - ▶ Characteristics of those linkages
- Helps you distinguish between different types of links
- Shows you the number of links to target files
- Indicates where documents have broken links or links to external files
- You can manage links manually or set preferences to control how links are managed when you test/publish a project



New Page Designer

- WYSIWYG environment that enables you to create and work with a resource while viewing its elements on the page
 - ▶ HTML, JSP
- Rewritten in Java
- Allows you to work with HTML files, JSP files and embedded JavaScript
- Three pages provide different ways to work with the file you are editing
 - ▶ Design page
 - ▶ Source page
 - ▶ Preview page
- Features include
 - ▶ Support for Visual Custom Tags (discussed later under Web resources)
 - ▶ XHTML support (discussed later under PvC support)
 - ▶ Visual Custom Tags for JSP
 - JSP custom tags to provide better visual rendering in the Design page

Note: You can still access Page Designer Classic

Pervasive Computing (PvC) Support

■ Page Designer

- ▶ Supports HTML 4.0.1 (along with some legacy tags and attributes)
- ▶ Provides extensibility so page editing modules for plugins can be customized to be suitable for PvC-enabled application development

■ Supported standards include

- ▶ XHTML support for the Page Designer Design and Source pages (*)
 - XHTML 1.0 (Strict, Transitional and Frameset)
 - XHTML Basic
 - XHTML mobile profile (defined in WAP 2.0)
- ▶ WCSS support in CSS Designer and Page Designer
- ▶ Supported device profiles in Page Designer
- ▶ WML and CHTML supported in Page Designer

JavaScript Editor

- Editor for editing separate Java Script files (.js)
- Contains all source editor functions
 - ▶ Content assist
 - ▶ Outline view
- Provides two pages
 - ▶ Source page enables you to view and work with a file's source code directly
 - ▶ Preview page shows you how the current page is likely to look when viewed in Microsoft Internet Explorer (by default)

Cascading Style Sheet (CSS) Editor

- Shows the source of a CSS file and enables you to edit styles with the help of
 - ▶ Syntax highlighting
 - ▶ Content assist
 - ▶ Preview function
- Extends the Eclipse CSS Editor to support CSS2 and to fully support WCCS
- Provides two panes with capabilities that are similar to those of Page Designer but with slightly different orientation and interaction
 - ▶ Source pane enables you to view and work with a file's source code directly
 - Code Assist
 - ▶ Preview pane shows you how the currently-defined styles are likely to look when viewed in Microsoft Internet Explorer (by default)
- Changes made are immediately applied to the Design page of the Page Designer if the HTML file has a link to the CSS file
- Integrated Styles View
- Gotchas
 - ▶ Brings styles view to front automatically
 - ▶ Adds menu items/buttons for new Styles
 - ▶ Synchronizes selection in preview to the source view

Static Web Project Support

- Web projects that hold static HTML content only
 - ▶ No JSPs or Servlets
 - ▶ No web.xml
- New Server type: "Static Web Server"
 - ▶ Point to an installed HTTP server
 - ▶ Publish with file copy or FTP
 - ▶ Supports aliases
 - ▶ No integrated start and stop mechanism
- Many customers have been asking for this function.

What to Expect for GA

- Minimal new function
- Bug fixes
- Performance tuning
- Improved usability
- Migration

Summary

- Overview of Web tooling
- New Web Tooling Features in WSSD V5

Section

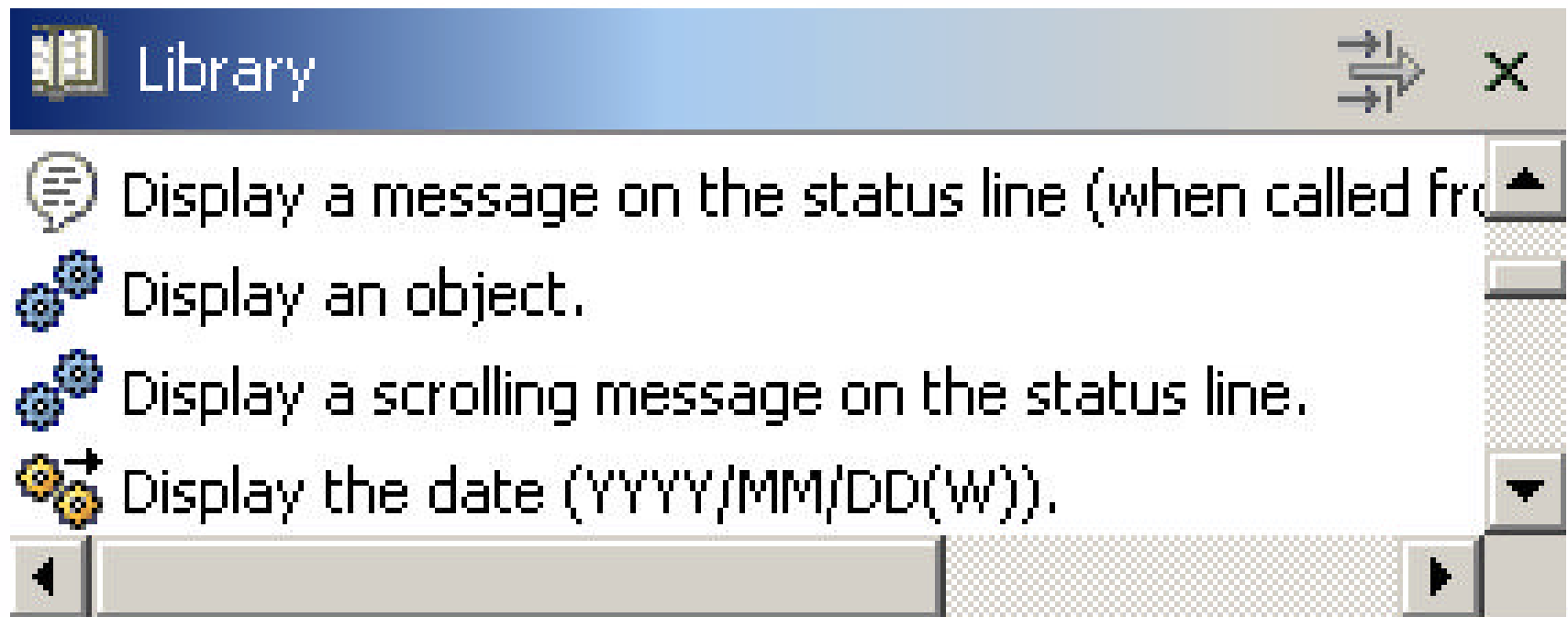
Appendix

Web Tooling Overview

- The following tools are the primary means for developing Web applications in the workbench
 - ▶ Wizards
 - ▶ Page Designer
 - ▶ web.xml Editor
 - ▶ Content assist

Web Perspective: Library View

- Allows you to catalog and organize reusable programming objects (e.g., HTML, JavaScript and JSP code) along with files and custom JSP tags
- Can be extended based on additional objects that you define and include
- Can contain
 - ▶ JavaScript elements
 - ▶ JSP elements
 - ▶ Other categories of programming objects that you define



Workbench Integration with Web Editors

- Many editors are available in WebSphere Studio for various file types
- To edit a file, either
 - ▶ Double-click on the file in the Navigator view
 - ▶ Select **Open** from the file's context menu
- The editor last used to open a file becomes the default for that particular file
- To use a different editor, select **Open With** from the file's context menu to choose from a list of available editors
- You can associate file extensions for different resource types with various editors
- Useful views include
 - ▶ Outline view
 - ▶ Properties view

Page Designer: Visual Custom Tags

- A JSP custom tag with the ability to render (visualize) itself in the Page Designer Design page
- Benefits include
 - ▶ JSP custom tags to provide better visual rendering in the Design page
 - ▶ Custom tag writers can develop their own visualization tags
 - ▶ Users will be able to change the attributes of custom tags to control their presentation

Removed or "Deprecated" Features

- Some features in the ActiveX Page Designer have NOT been carried forward.
 - ▶ Dynamic elements / tables
 - ▶ Accessibility checker
 - ▶ DTC support
 - ▶ Active X embedding
 - ▶ BiDi support

- Because of this, the ActiveX Page Designer will be available for customers who need it
 - ▶ It is called "Page Designer Classic"
 - ▶ Active via Preferences->File Associations

- Next release will have competitive function in all these areas and "Page Designer Classic" will be removed.

Improved Web Tooling Wizards

■ Web Project Wizard

- ▶ Selectable features
 - Support for preconfigured Jakarta taglibs
 - Extendible by other plugins
- ▶ Select J2EE Level

■ JSP Wizard

- ▶ Options for doctypes and all page directives
- ▶ Easily import taglibs into a page

■ Java Bean Web Pages

- ▶ Now supports complex types on input and output
- ▶ Supports array types on output

Web Perspective: Library View Features

- Drag-and-drop to Page Designer's Design page and various source editing pages
 - ▶ Drag items from the view into the active editor and the text will be dropped into the document at the cursor location
- Double-click support
 - ▶ Double-click on an item and have it inserted at the current cursor position in the active editor
- User-defined categories and items
 - ▶ Define/edit/remove view category items
- Plugin-defined categories and items
 - ▶ Plugin developers can contribute a default list of items to their own categories
- Variables in insertions
 - ▶ When variables are inserted, you will be prompted for values for each variable
- Category filtering
 - ▶ Select which categories are shown in the Library view
- Custom insertion
 - ▶ Plugin developers can customize the behavior of items so that when they are dropped during a drag/drop action, both the text that is inserted and the insertion location are strictly defined
- Category organization
 - ▶ All categories and items within them are displayed alphabetically by default